

## RENNES METROPOLE

ETUDE PREALABLE POUR LA MISE EN PLACE D'UN  
PROGRAMME D' ACTIONS PLURIANNUEL POUR LA  
RECONQUETE DU BON ETAT DES MASSES D'EAU DE  
LA ZONE CŒUR DE RENNES METROPOLE

Décembre 2021

PROGRAMME D'ACTION  
ATLAS CARTOGRAPHIQUE

Atlas cartographique par tronçons.....3



Atlas cartographique par dalle.....22





**ACTIONS SUR LE LIT MINEUR**

-  Diversification et restauration du lit
-  Remise du cours d'eau dans son talweg
-  Remise du cours d'eau à ciel ouvert
-  Reméandrage
-  Réduction de section
-  Réhaussement du lit en plein
-  Réhaussement du lit en taches
-  Recréation de zones de source (rang 0)
-  Tracé projeté




**ACTIONS SUR LES BERGES**

-  Fascinage végétal
-  Installation de clôture








**ACTIONS SUR LA RIPISYLVE**

-  Restauration de la ripisylve
-  Travaux de plantation de berge



**ACTIONS SUR LE LIT MAJEUR**

-  Restauration de zone humide par déblai
-  Restauration de zone humide par remblai
-  Suppression de plan d'eau déconnecté






**ACTIONS SUR LES OUVRAGES DE FRANCHISSEMENT**

-  Ajout d'un ouvrage
-  Aménagement de passerelle
-  Rampe d'enrochement
-  Remplacement par buse type PEHD
-  Remplacement par pont cadre
-  Suppression d'un petit ouvrage
-  Suppression totale d'un seuil




**ACTIONS SUR LES OUVRAGES HYDRAULIQUES**

-  Effacement Total
-  Etude complémentaire

**AUTRES ACTIONS**

-  Travaux d'aménagement d'abreuvoirs à définir
-  Abreuvoir à supprimer
-  Embacle à gérer
-  Embacle à supprimer
-  Déconnexion de drain/rejet EP

**INFORMATION COMPLÉMENTAIRE**

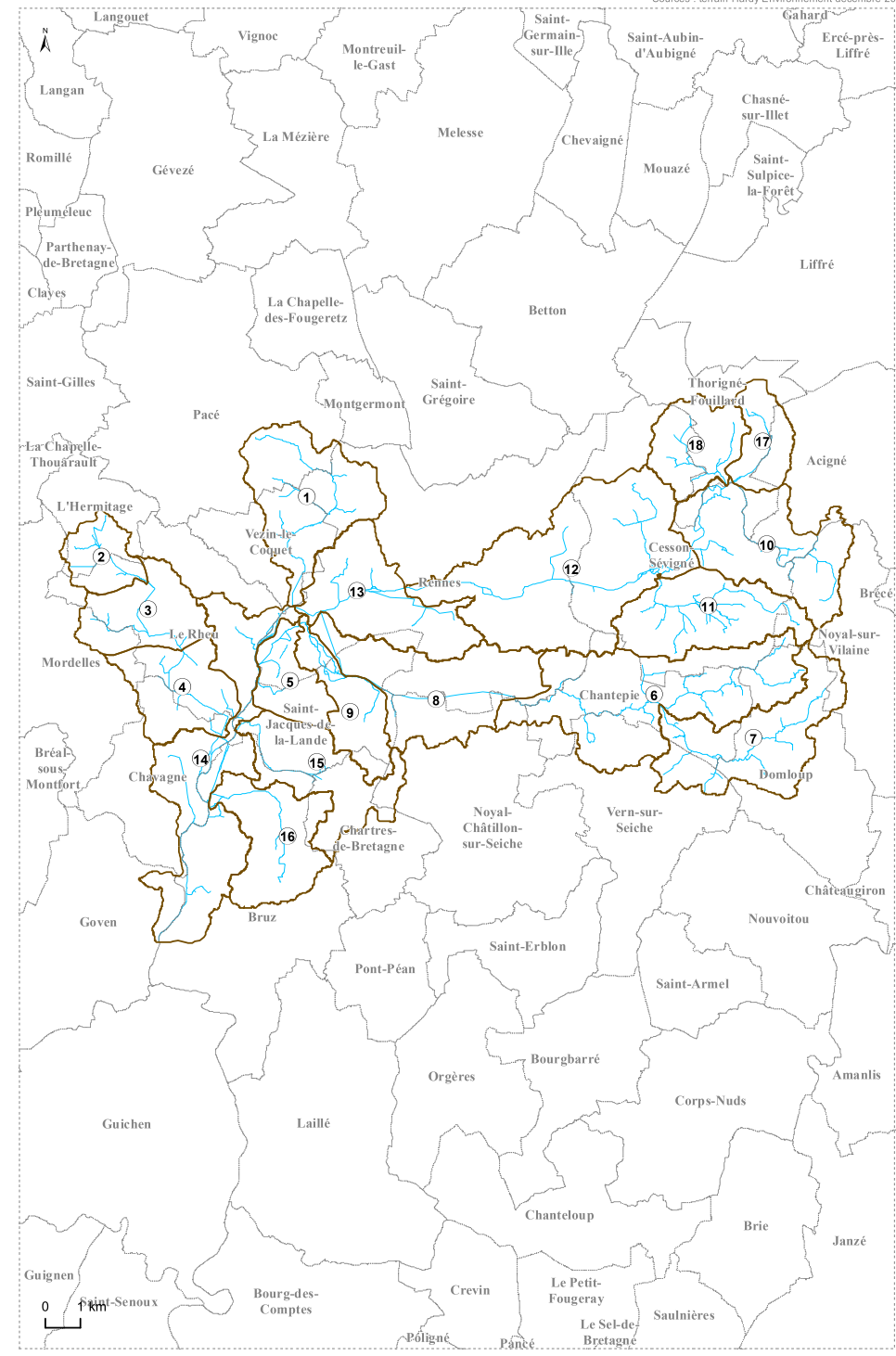
-  Cours d'eau
-  Autre linéaire dégradé nécessitant des actions
-  Inventaire zones humides (SAGE Vilaine)

**PROGRAMMATION**

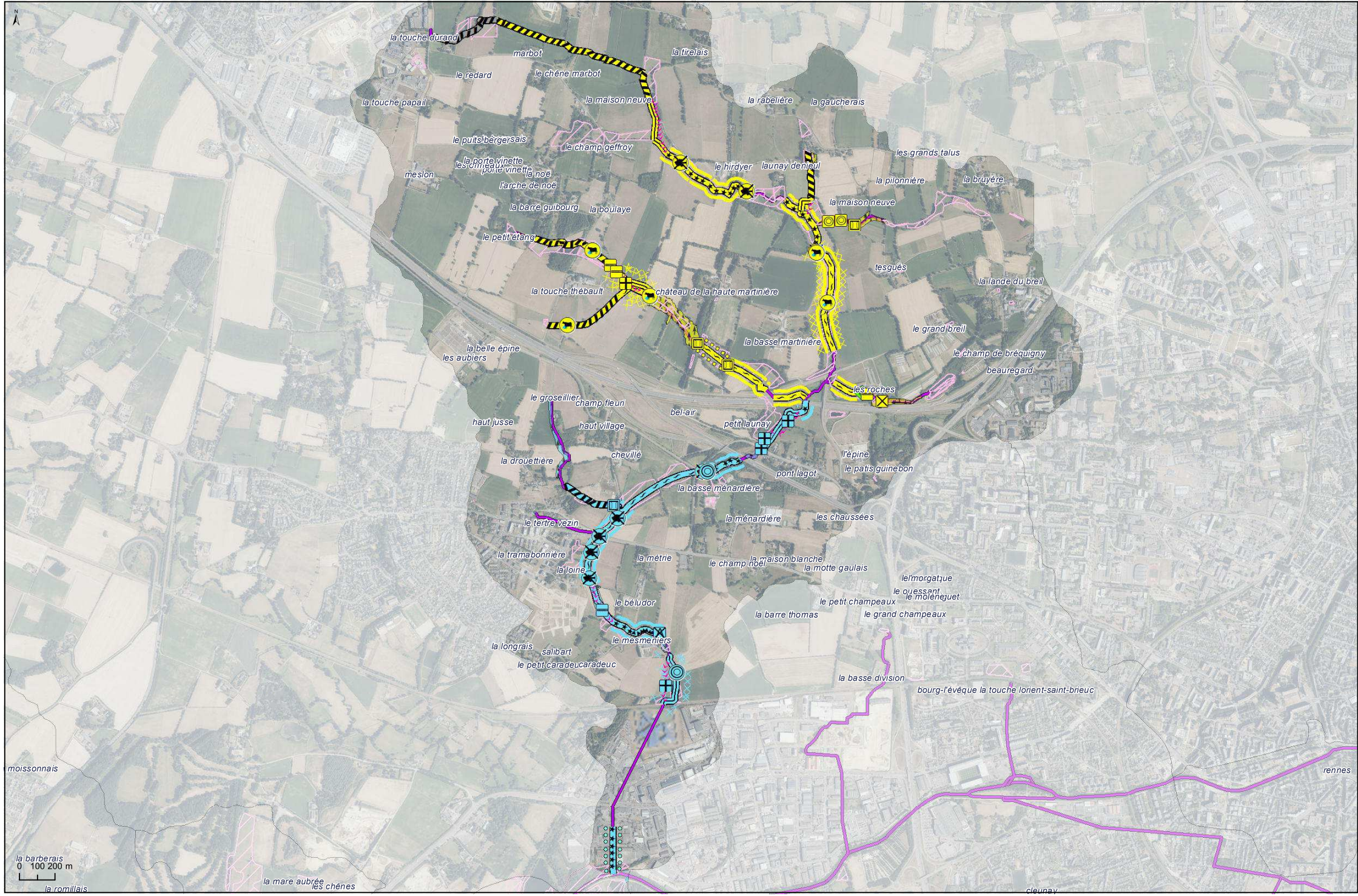
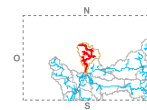
-  Année 1
-  Année 2
-  Année 3
-  Année 4
-  Année 5
-  Année 6

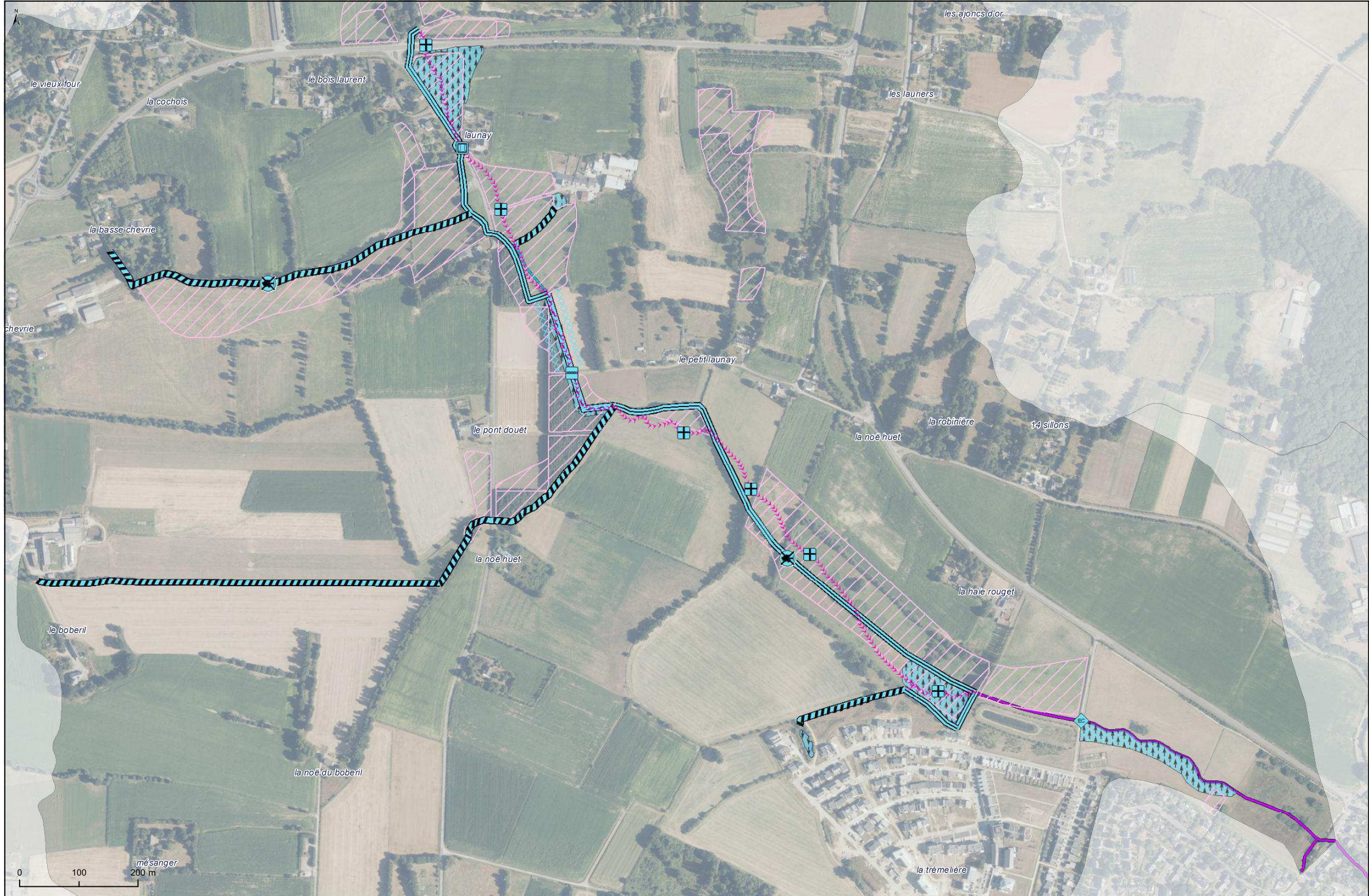
Superposition inventaire zones humides + actions sur le lit majeur = Restauration de zones humides  
 Pas d'inventaire zones humides = Création de zones humides

En partenariat avec les services de Rennes Métropole, des actions connexes seront également mises en place afin d'améliorer la gestion qualitative et quantitative de l'eau du bassin versant (mise en conformité de l'assainissement autonome, création de zones tampons des eaux pluviales...).

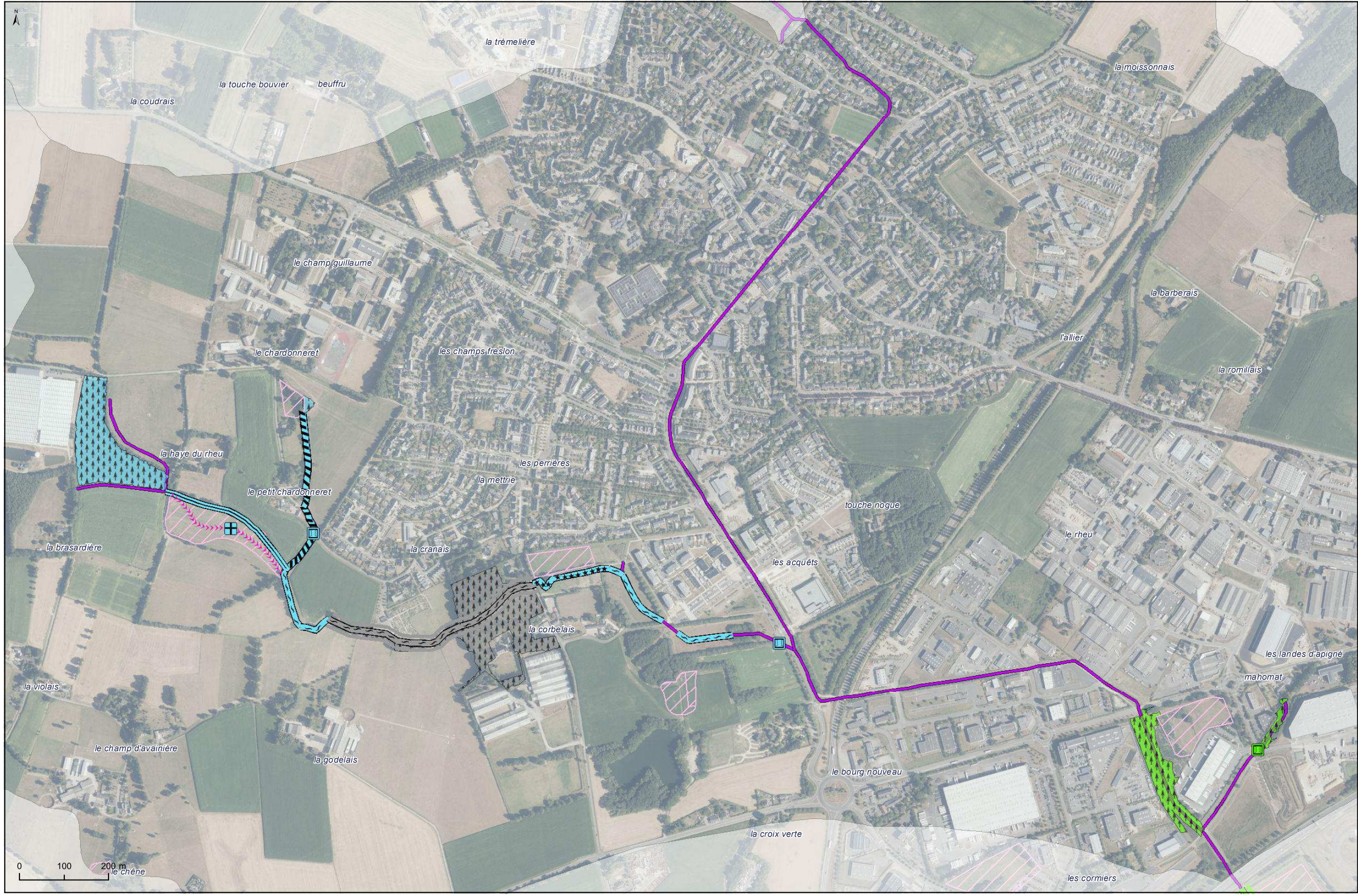


# ATLAS - PROGRAMME D'ACTION TRONÇON N°01 - PONT-LAGOT PRIORITÉ FAIBLE

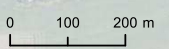
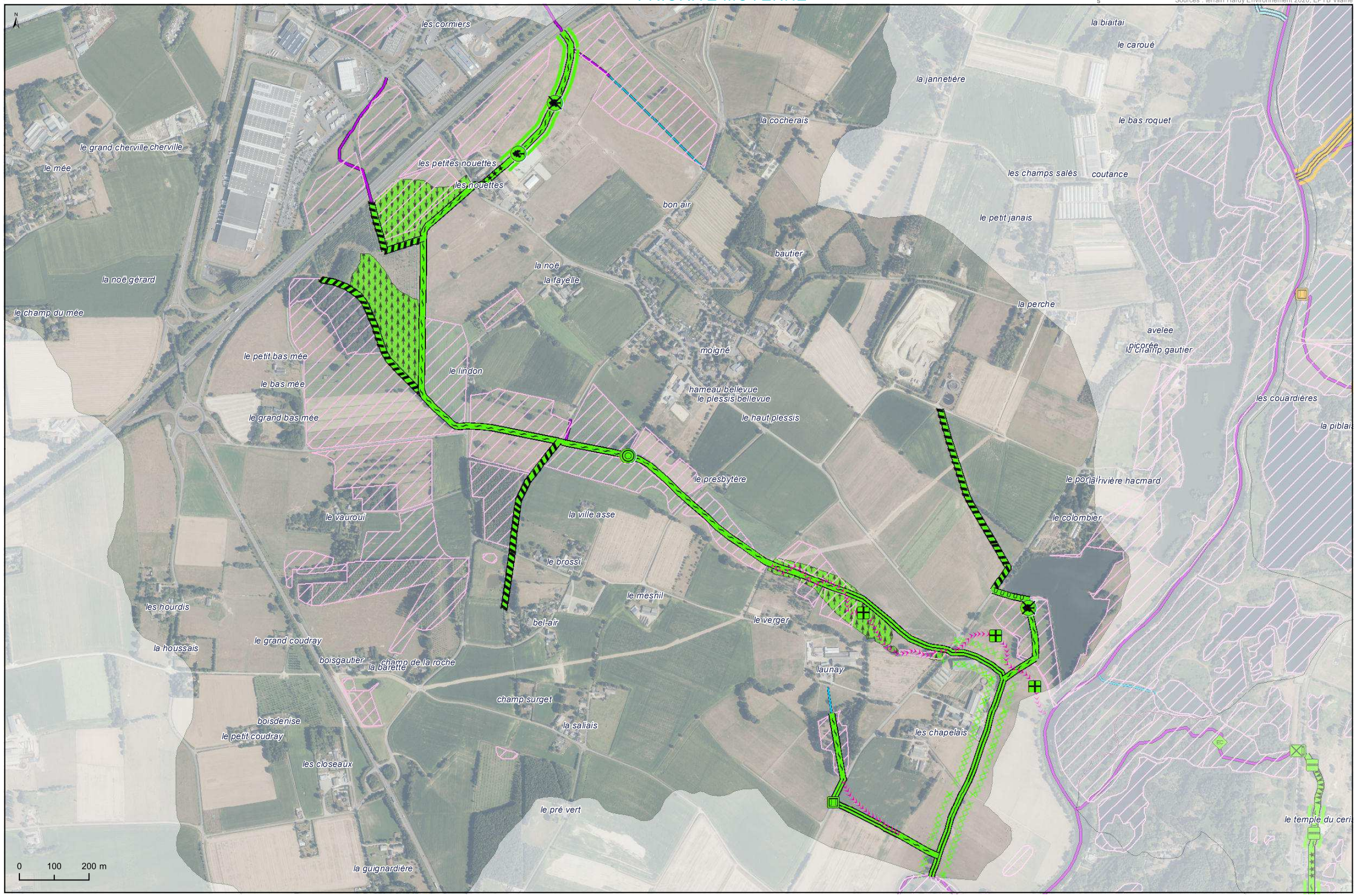




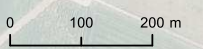
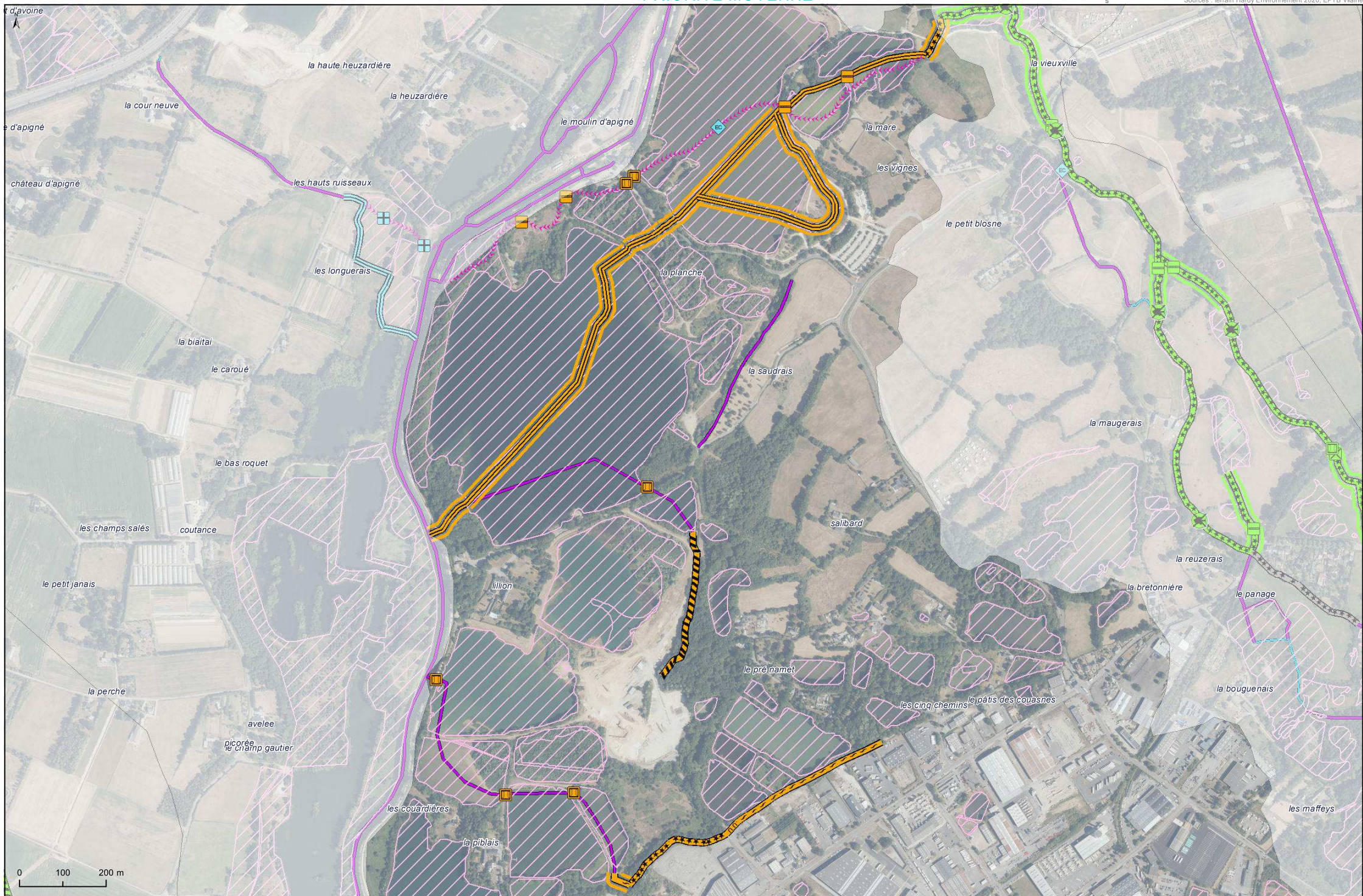
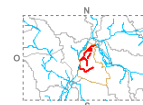
# ATLAS - PROGRAMME D'ACTION TRONÇON N°03 - LINDON MÉDIAN – LE RHEU PRIORITÉ MOYENNE



# ATLAS - PROGRAMME D'ACTION TRONÇON N°04 - LINDON AVAL PRIORITÉ MOYENNE

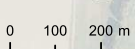
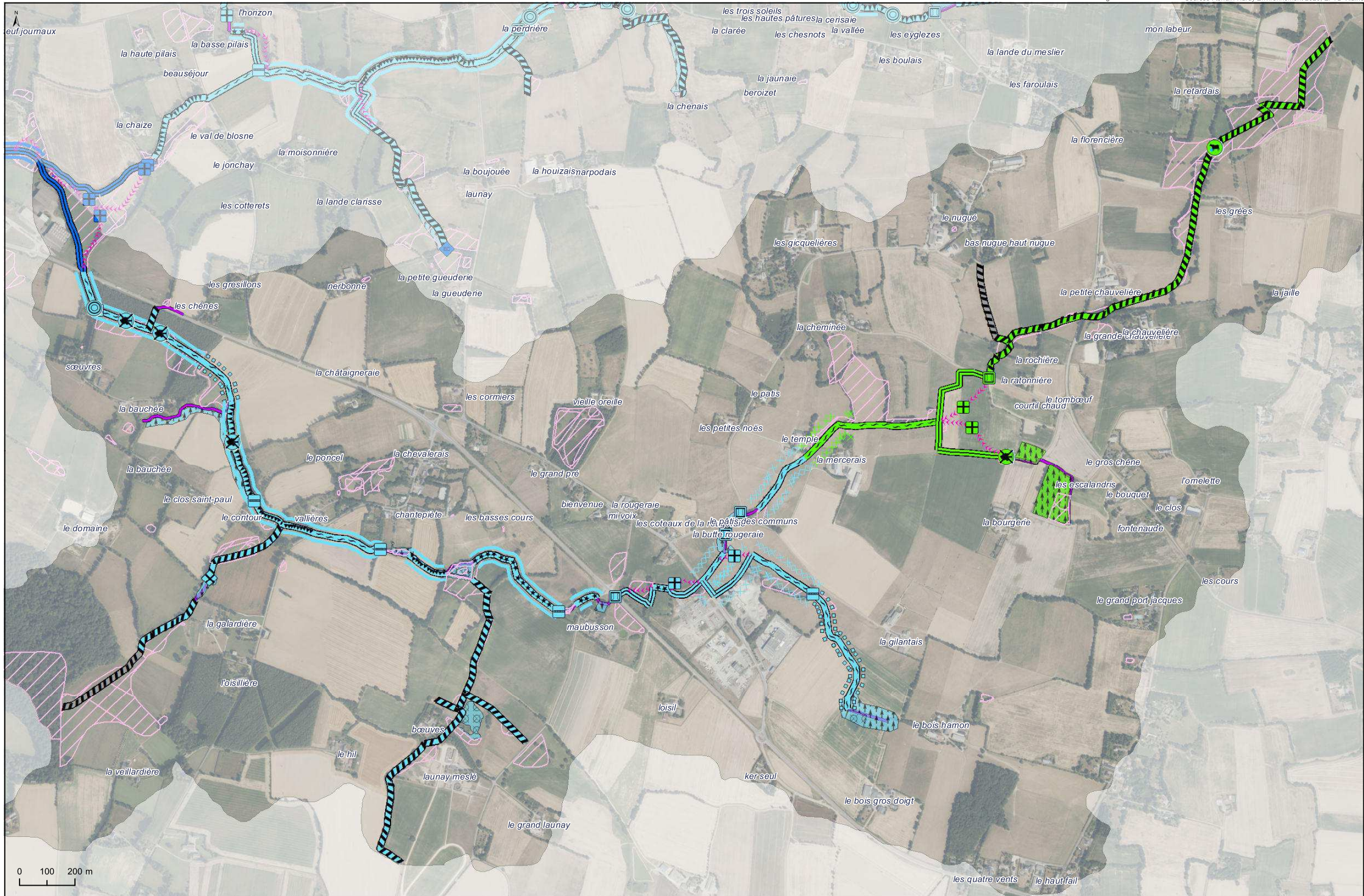
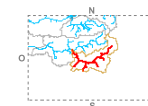


**ATLAS - PROGRAMME D'ACTION**  
**TRONÇON N°05 - GRAVIÈRES DE LA PIBLAIS**  
**PRIORITÉ MOYENNE**

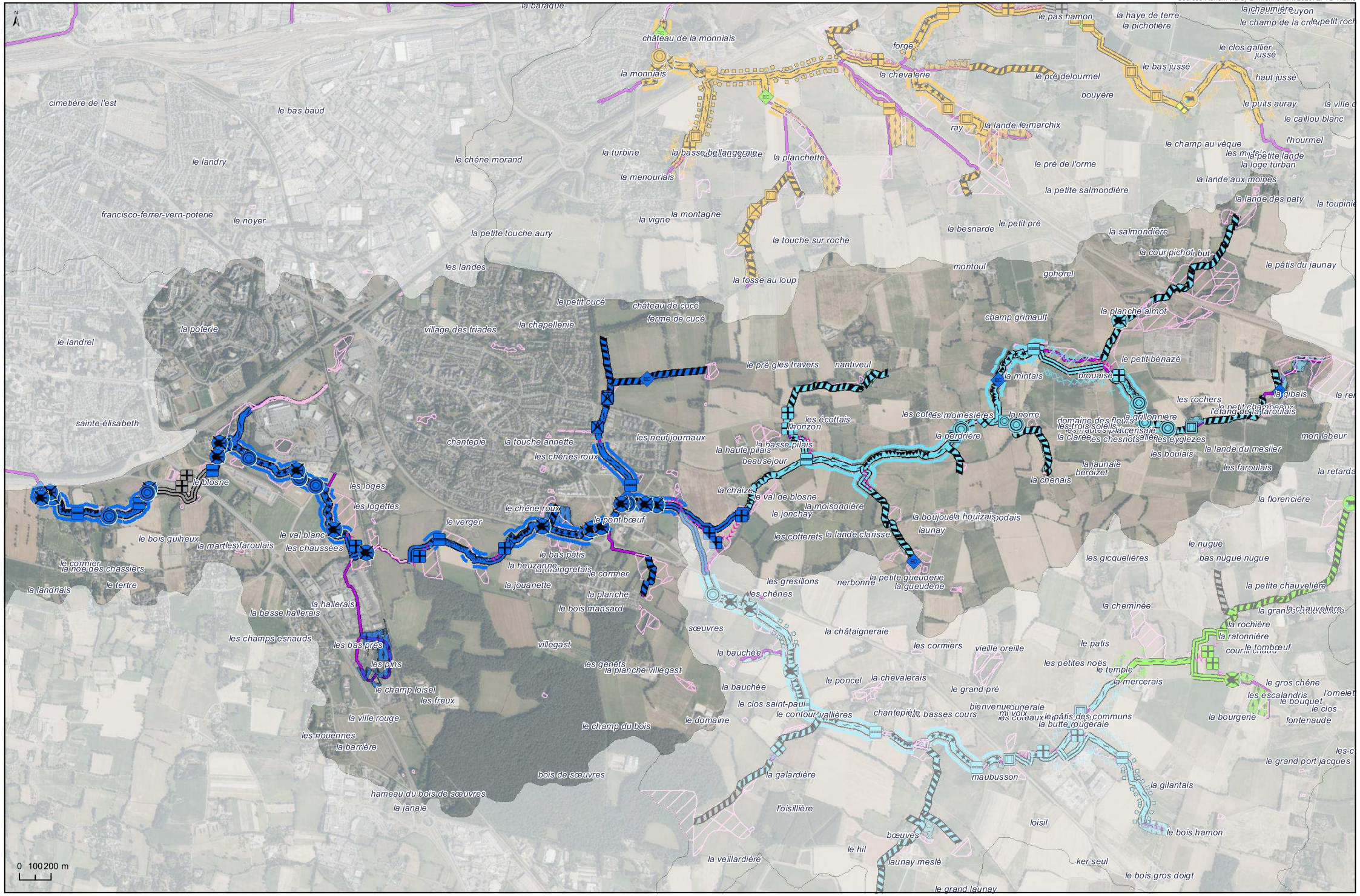
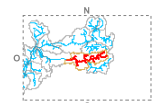




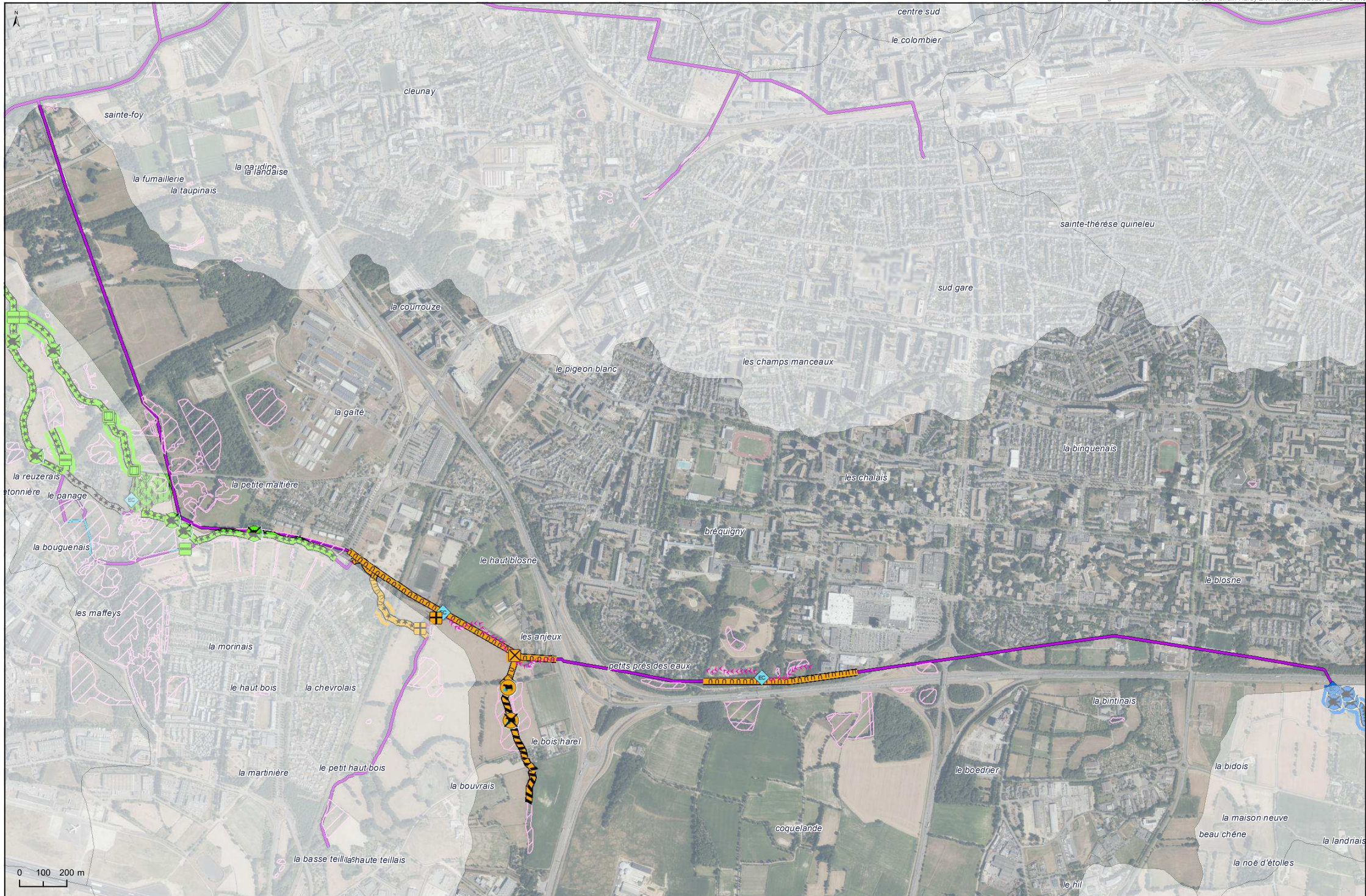
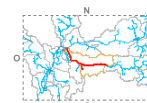
# ATLAS - PROGRAMME D'ACTION TRONÇON N°06 - AFFLUENT RG DU BLOSNE PRIORITÉ FORTE



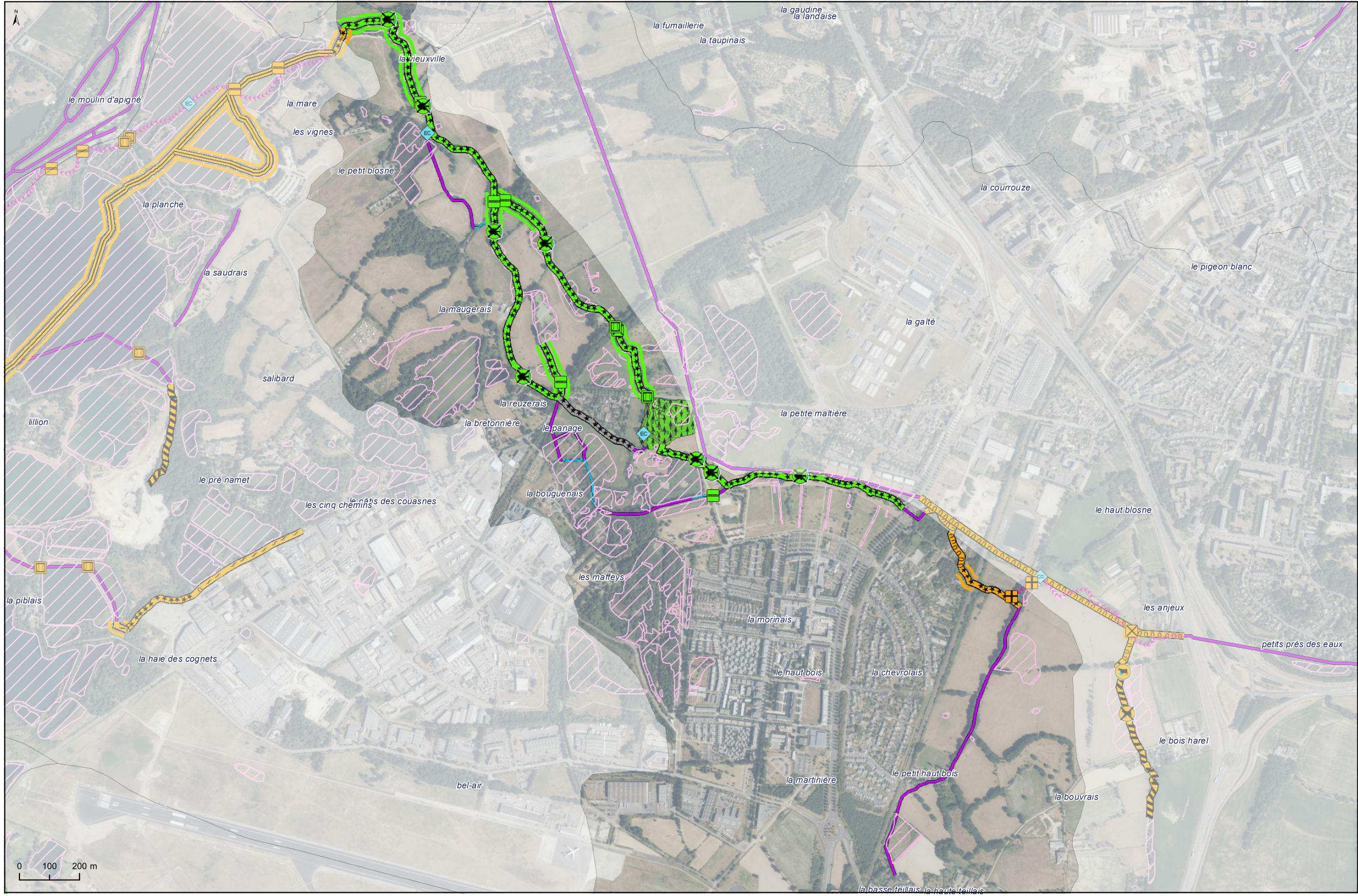
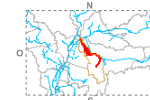
ATLAS - PROGRAMME D'ACTION  
TRONÇON N°07 - BLOSNE AMONT  
PRIORITÉ FORTE



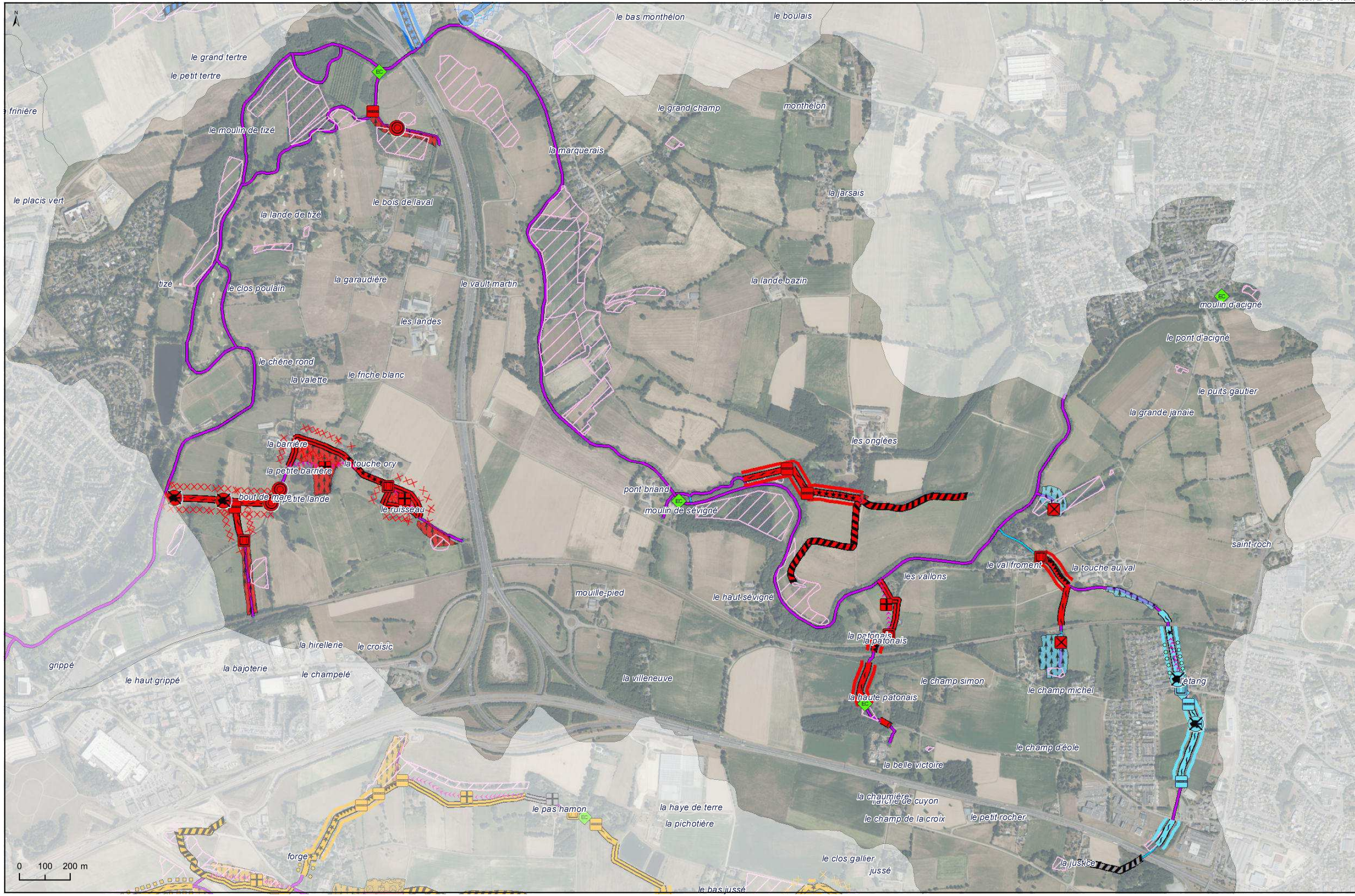
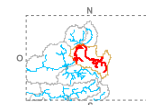
# ATLAS - PROGRAMME D'ACTION TRONÇON N°08 - DALOT DU BLOSNE PRIORITÉ MOYENNE



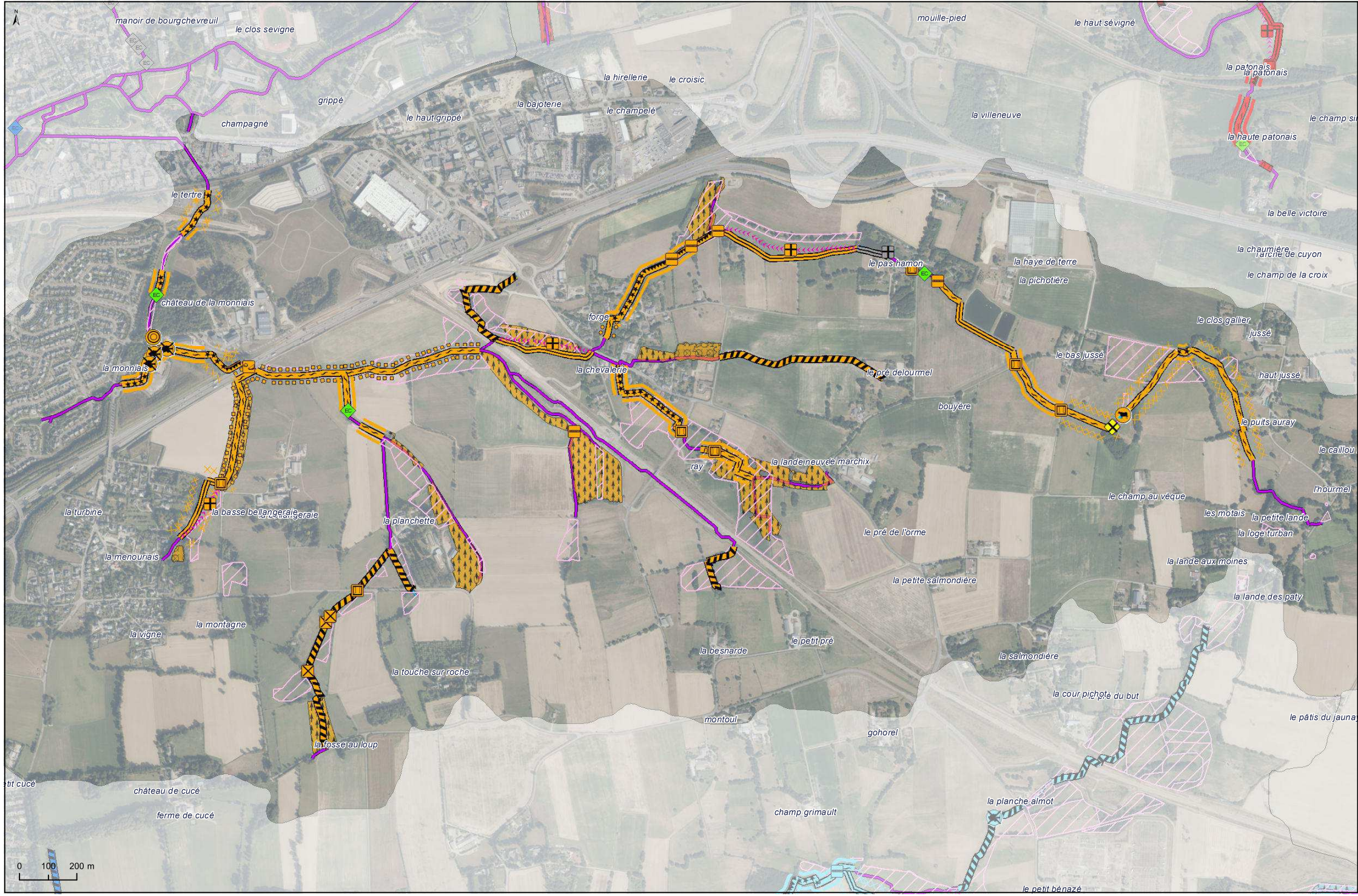
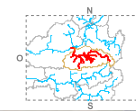
0 100 200 m



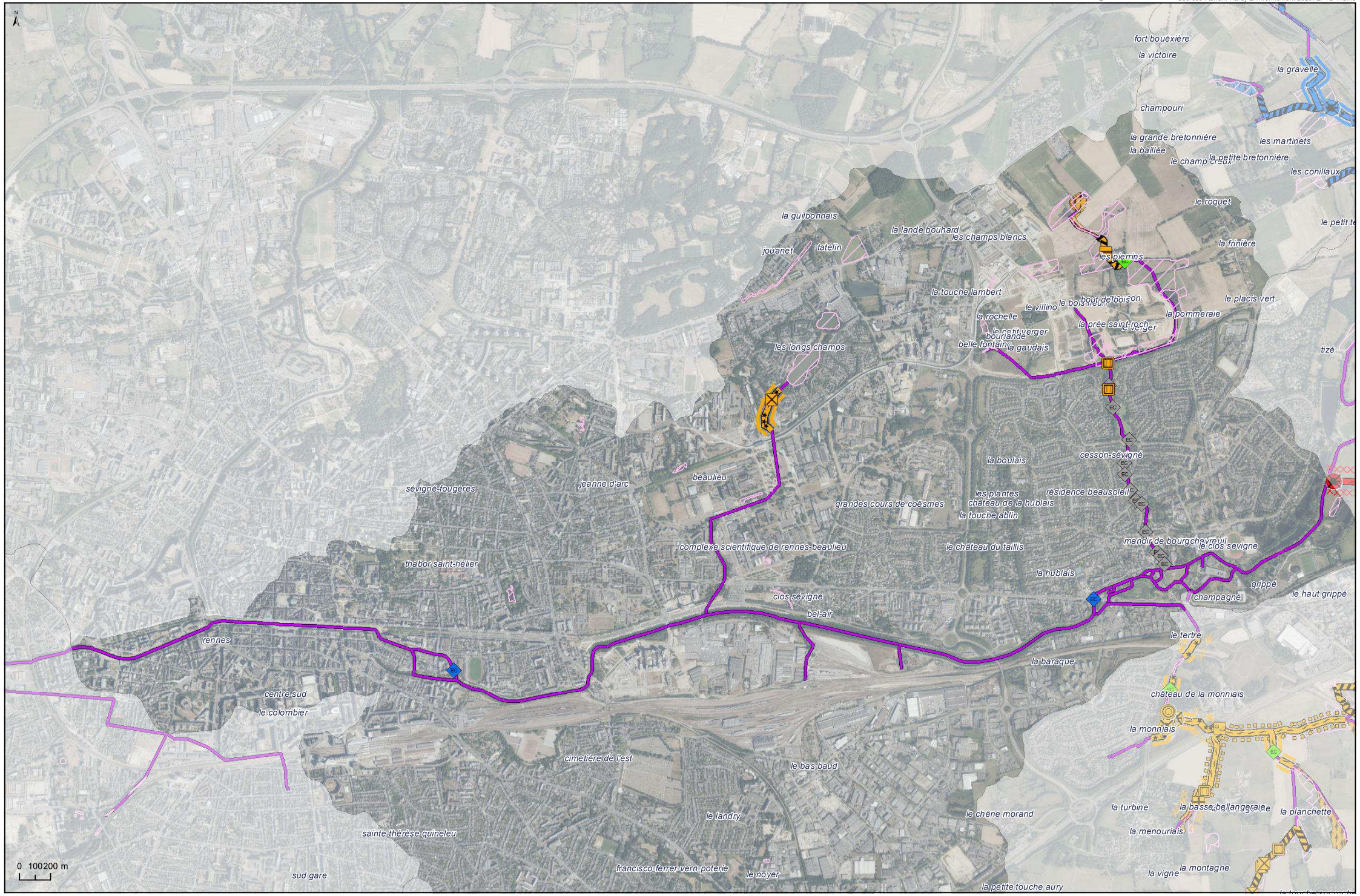
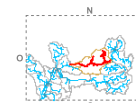
# ATLAS - PROGRAMME D'ACTION TRONÇON N°10 - VILAINE AMONT PRIORITÉ MOYENNE



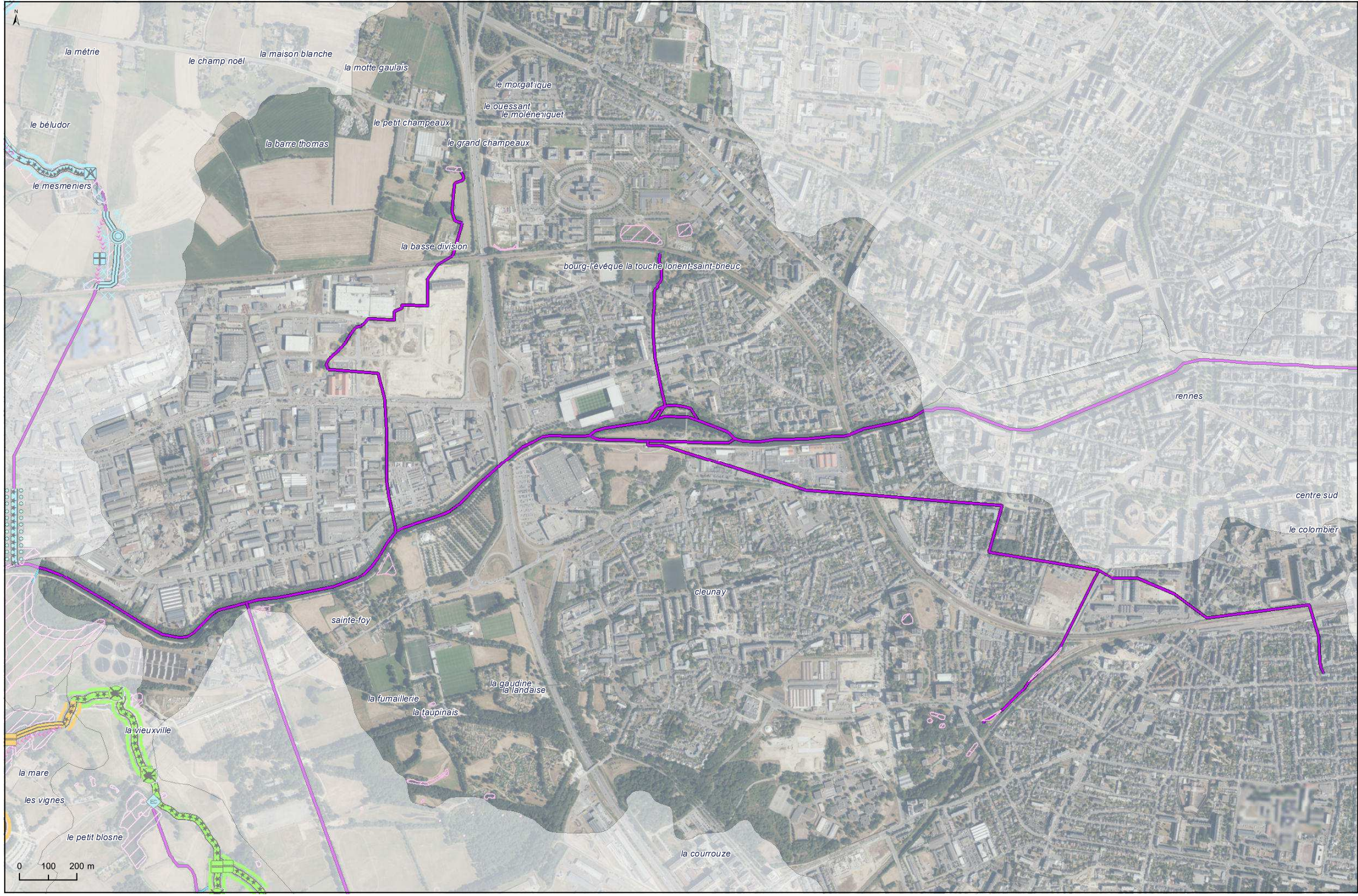
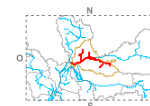
# ATLAS - PROGRAMME D'ACTION TRONÇON N°11 - RUISSEAU DE LA MONNIAIS PRIORITÉ FAIBLE



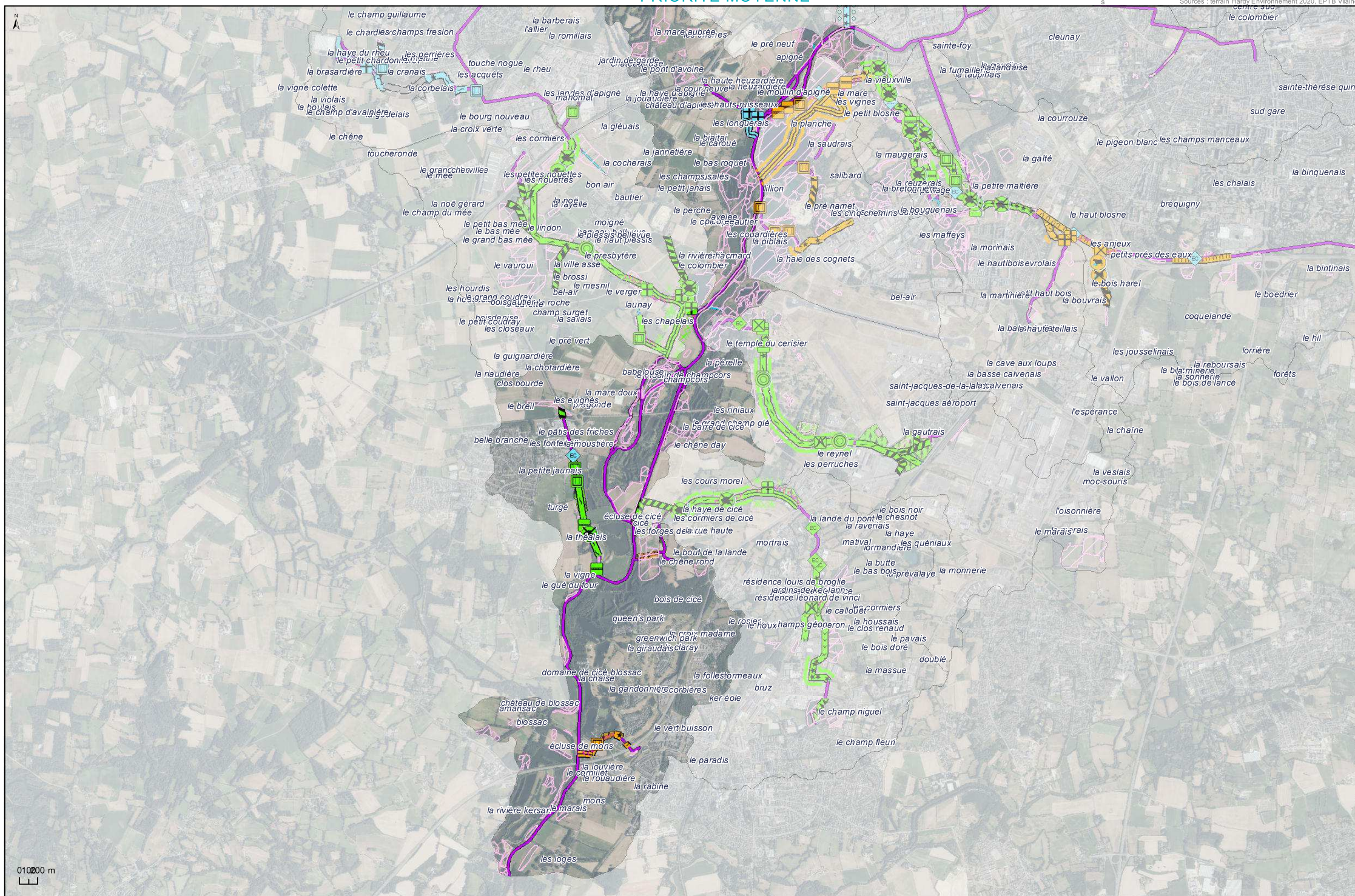
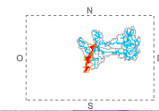
ATLAS - PROGRAMME D'ACTION  
TRONÇON N°12 - VILAINE MÉDIANE (CESSON-SÉVIGNÉ)  
PRIORITÉ FAIBLE



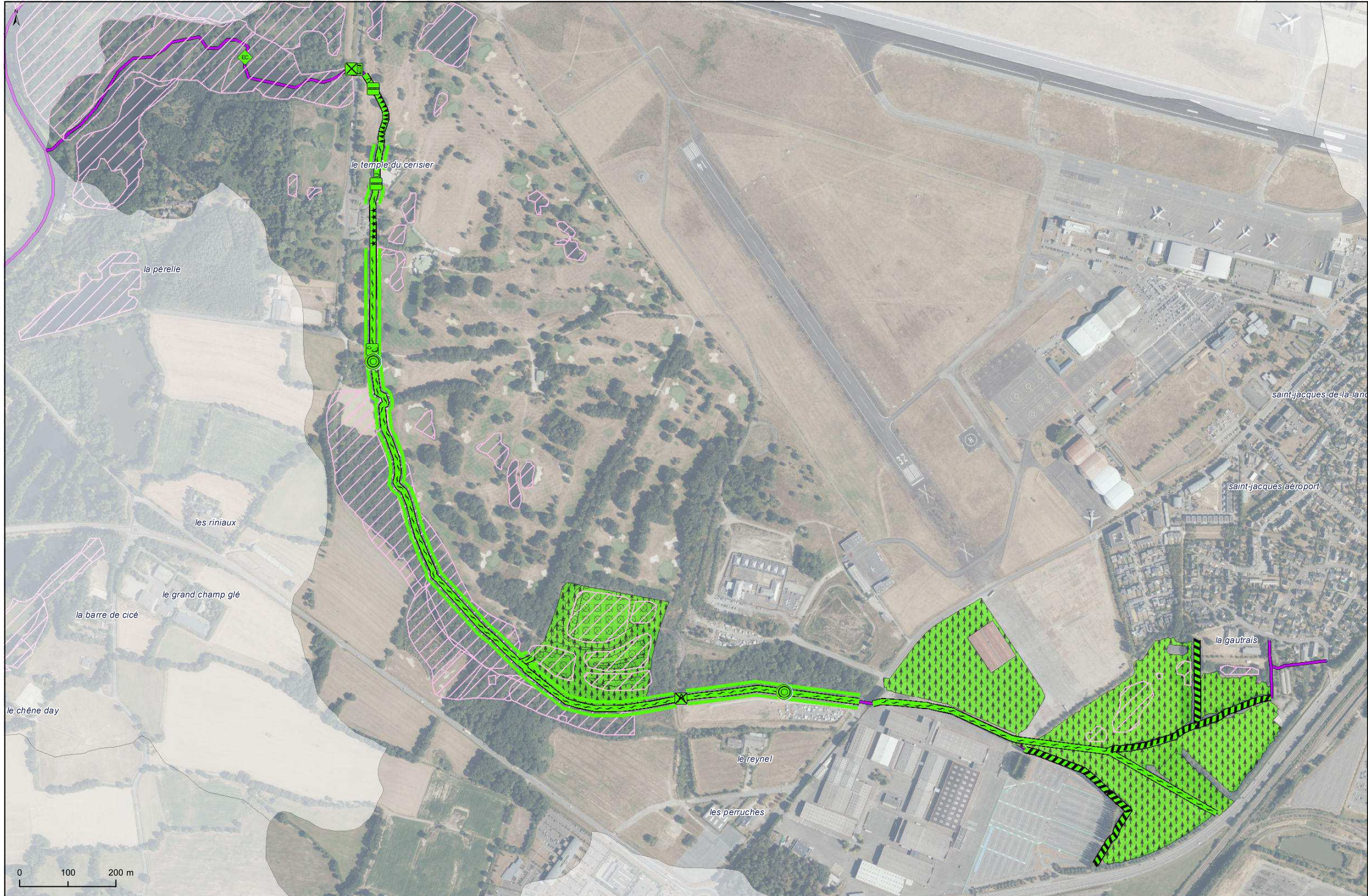
# ATLAS - PROGRAMME D'ACTION TRONÇON N°13 - VILAINE MÉDIANE (RENNES) PRIORITÉ FAIBLE



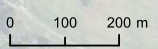
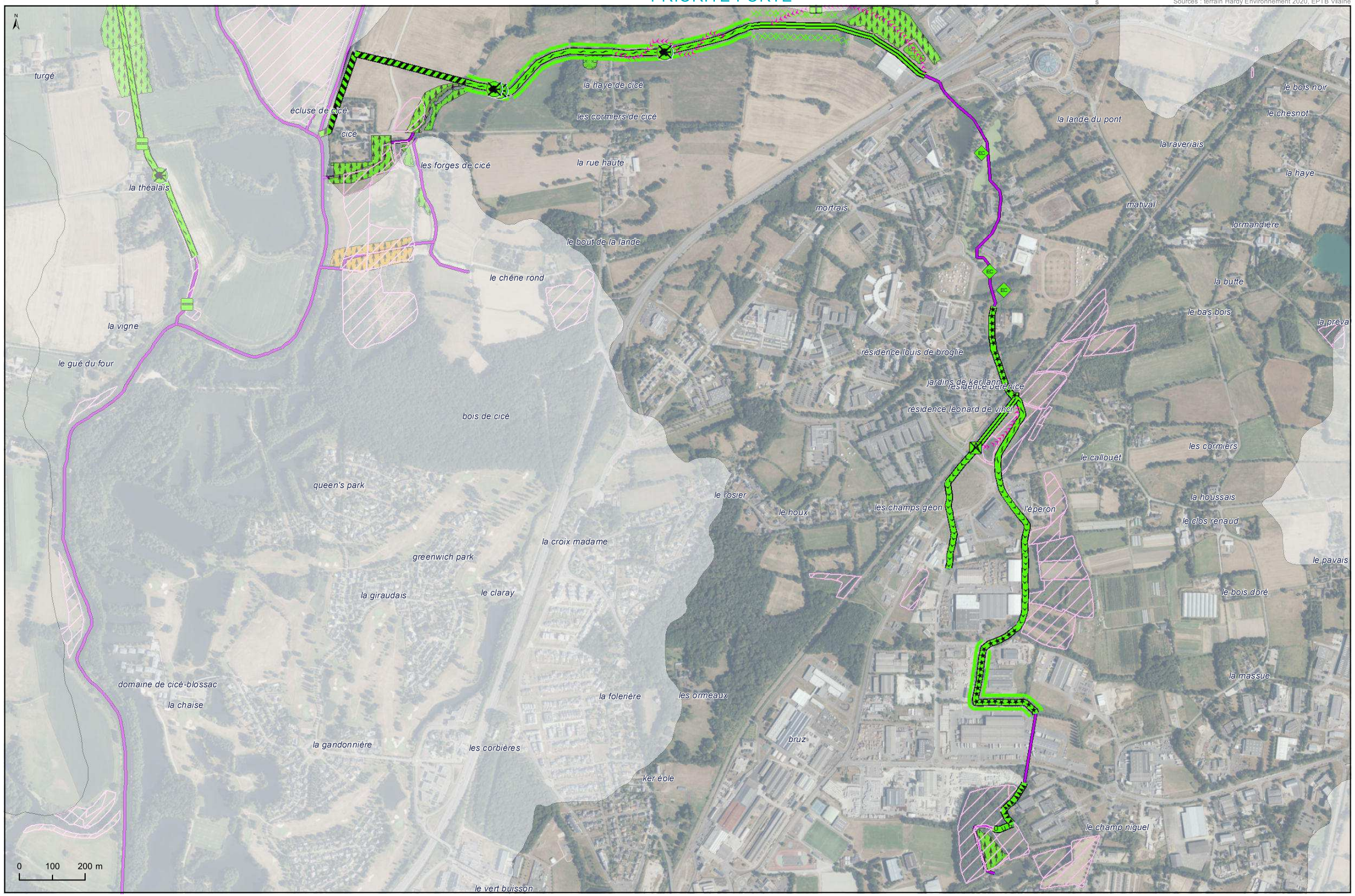




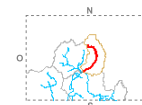
# ATLAS - PROGRAMME D'ACTION TRONÇON N°15 - RUISSEAU DE REYNEL PRIORITÉ FORTE



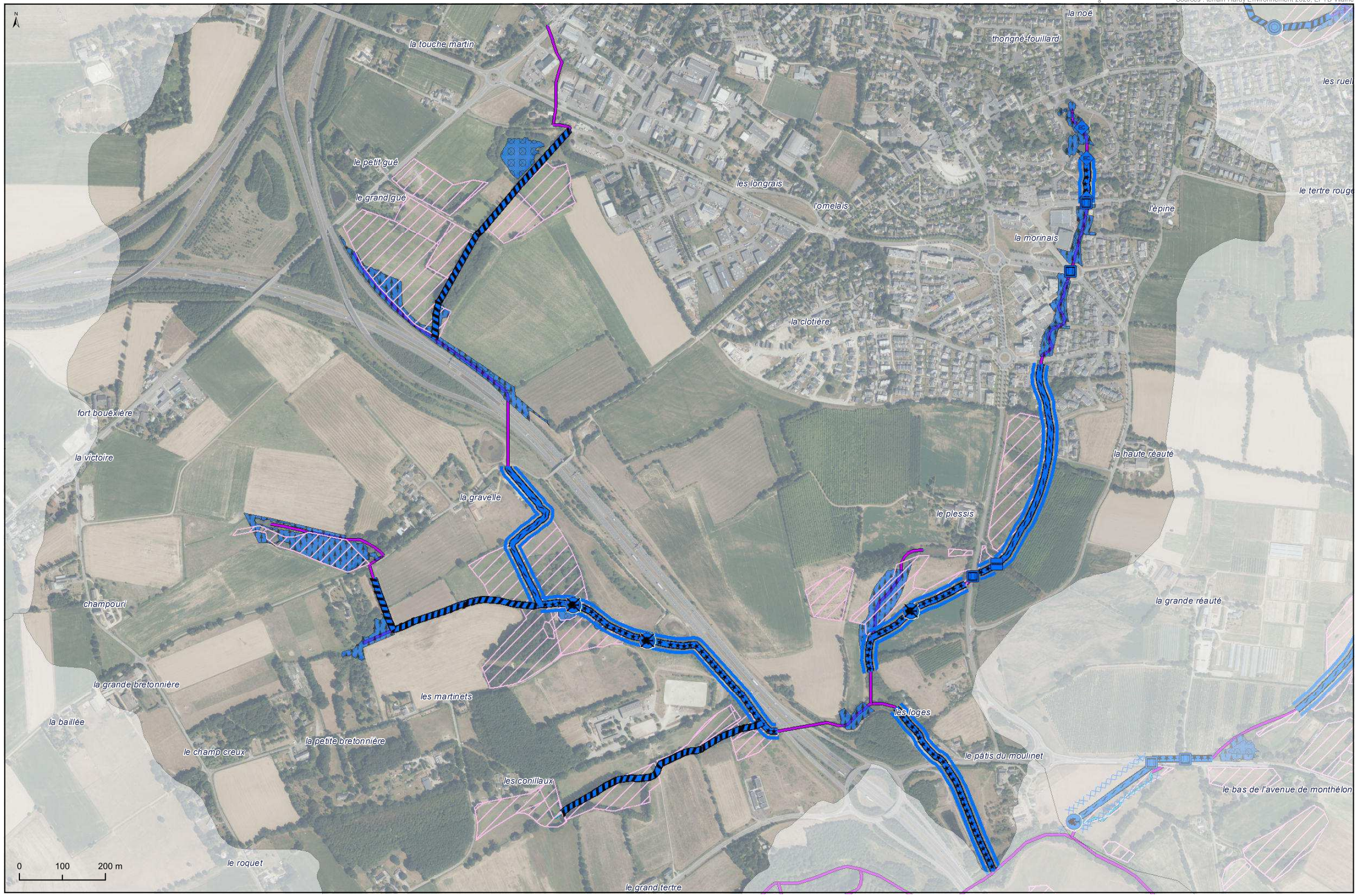
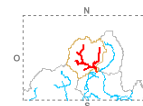
# ATLAS - PROGRAMME D'ACTION TRONÇON N°16 - RUISSEAU DE MORTAIS PRIORITÉ FORTE



# ATLAS - PROGRAMME D'ACTION TRONÇON N°17 - THORIGNÉ-FOUILLARD (SECTEUR EST) PRIORITÉ FORTE



# ATLAS - PROGRAMME D'ACTION TRONÇON N°18 - THORIGNÉ-FOUILLARD (SECTEUR OUEST) PRIORITÉ FORTE

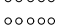



# PROGRAMME D'ACTION LÉGENDE


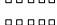
### ACTIONS SUR LE LIT MINEUR

-  Diversification et restauration du lit
-  Remise du cours d'eau dans son talweg
-  Remise du cours d'eau à ciel ouvert
-  Reméandrage
-  Réduction de section
-  Réhaussement du lit en plein
-  Réhaussement du lit en taches
-  Récréation de zones de source (rang 0)
-  Tracé projeté




### ACTIONS SUR LES BERGES

-  Fascinage végétal
-  Installation de clôture








### ACTIONS SUR LA RIPISYLVE

-  Restauration de la ripisylve
-  Travaux de plantation de berge



### ACTIONS SUR LE LIT MAJEUR

-  Restauration de zone humide par déblai
-  Restauration de zone humide par remblai
-  Suppression de plan d'eau déconnecté






### ACTIONS SUR LES OUVRAGES DE FRANCHISSEMENT

-  Ajout d'un ouvrage
-  Aménagement de passerelle
-  Rampe d'enrochement
-  Remplacement par buse type PEHD
-  Remplacement par pont cadre
-  Suppression d'un petit ouvrage
-  Suppression totale d'un seuil




### ACTIONS SUR LES OUVRAGES HYDRAULIQUES

-  Effacement Total
-  Etude complémentaire

### AUTRES ACTIONS

-  Travaux d'aménagement d'abreuvoirs à définir
-  Abreuvoir à supprimer
-  Embacle à gérer
-  Embacle à supprimer
-  Déconnexion de drain/rejet EP

### INFORMATION COMPLÉMENTAIRE

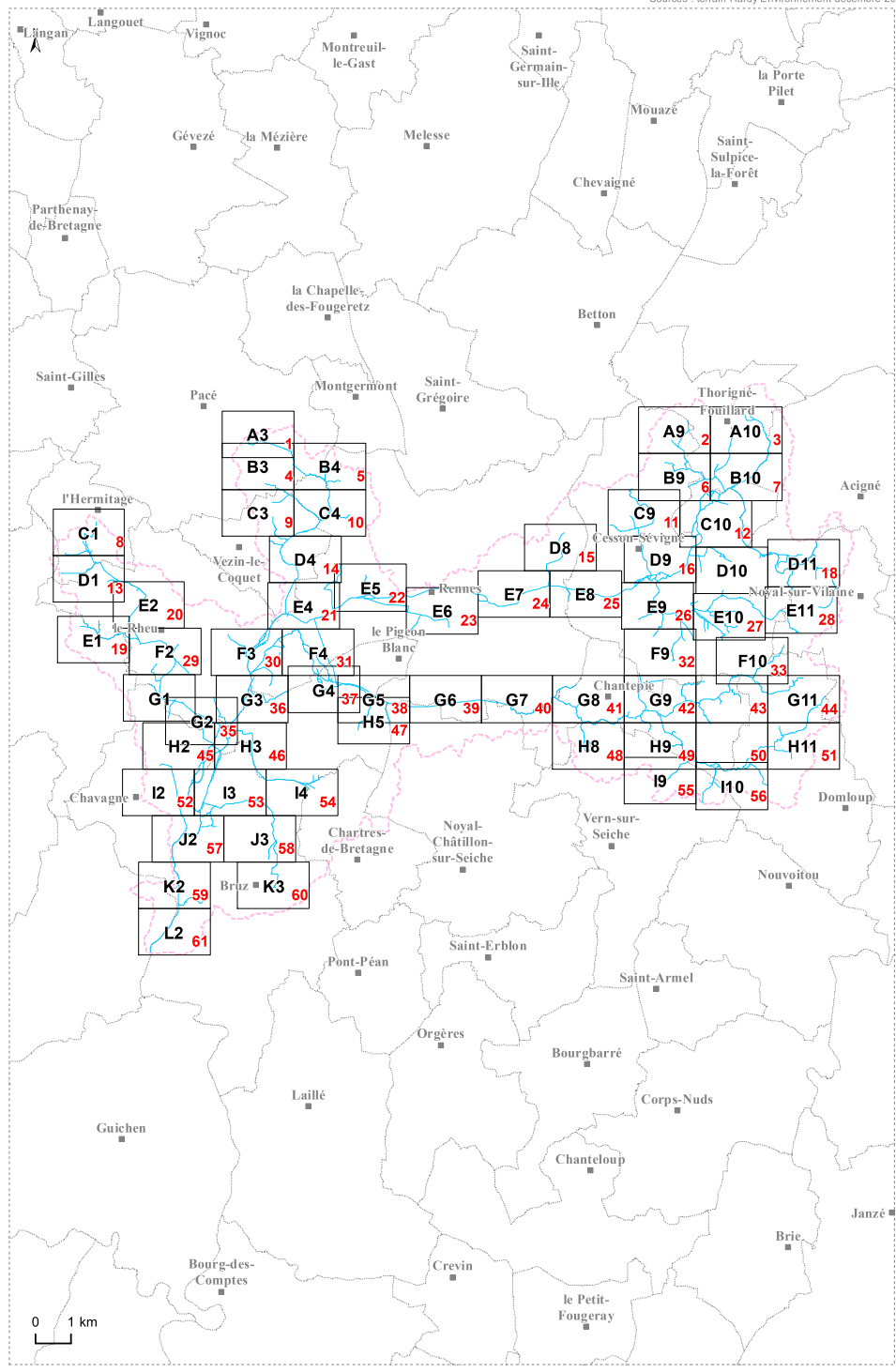
-  Cours d'eau
-  Autre linéaire dégradé nécessitant des actions
-  Inventaire zones humides (SAGE Vilaine)

### PROGRAMMATION

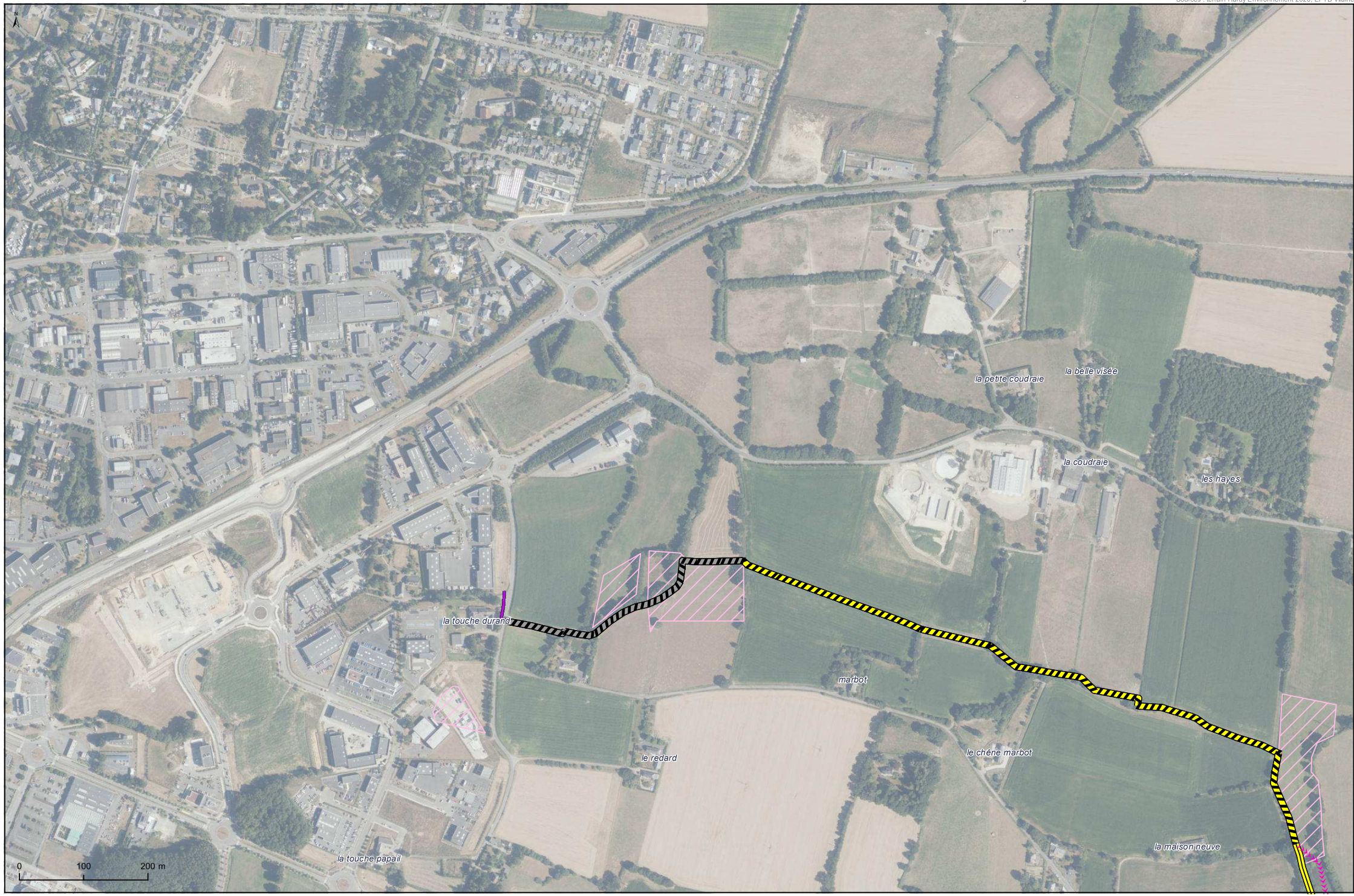
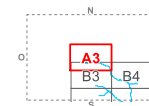
-  Année 1
-  Année 2
-  Année 3
-  Année 4
-  Année 5
-  Année 6

Superposition inventaire zones humides + actions sur le lit majeur = Restauration de zones humides  
 Pas d'inventaire zones humides = Création de zones humides

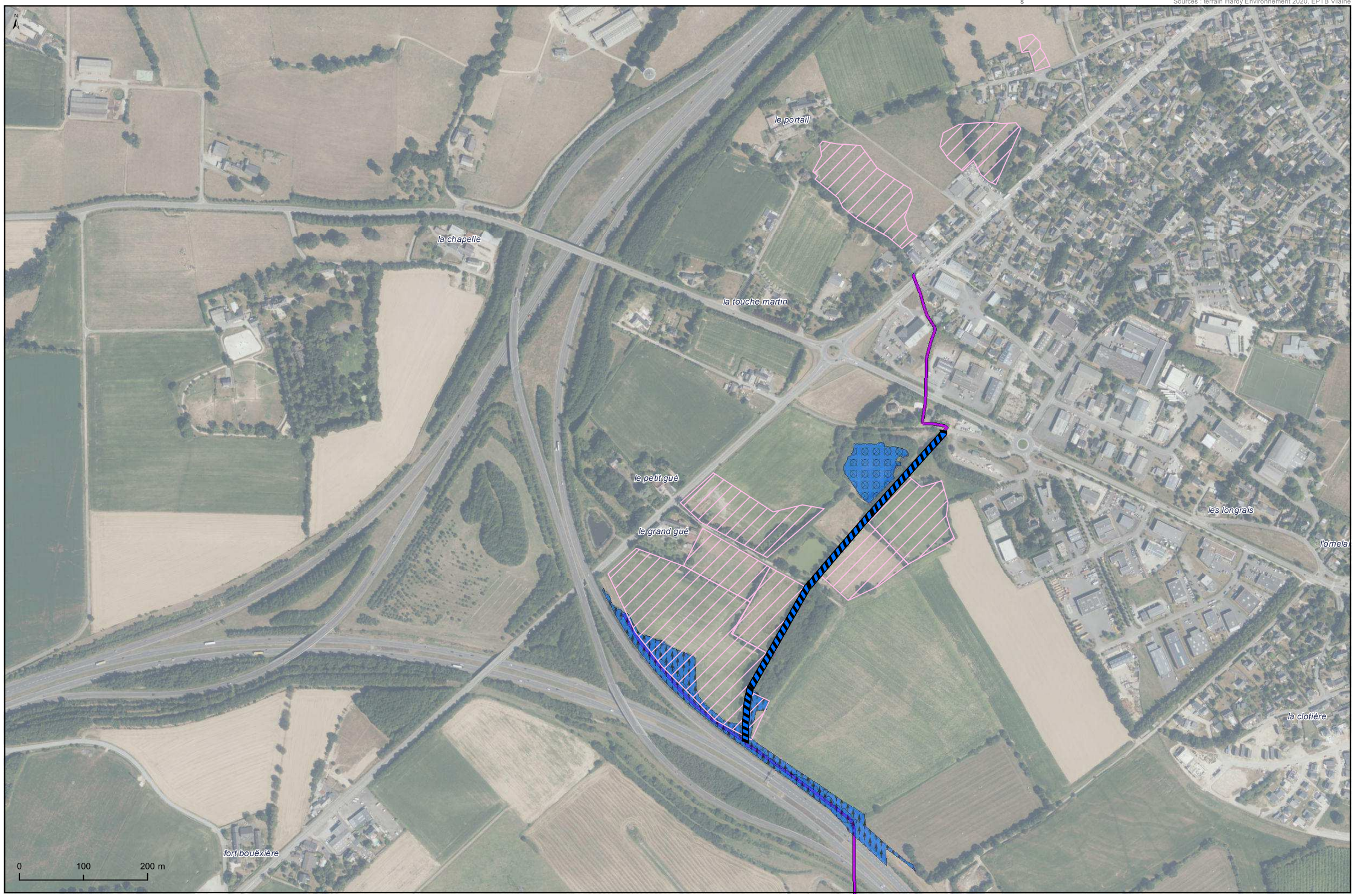
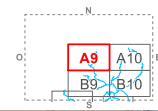
En partenariat avec les services de Rennes Métropole, des actions connexes seront également mises en place afin d'améliorer la gestion qualitative et quantitative de l'eau du bassin versant (mise en conformité de l'assainissement autonome, création de zones tampons des eaux pluviales...).



# ATLAS PROGRAMME D'ACTION



# ATLAS PROGRAMME D'ACTION





# ATLAS PROGRAMME D'ACTION

